



# Enmore & Goathurst Parish Magazine

December 2025

Well another year almost over and one wonders where the last one went- is it my imagination or does time really fly as you get older? I need to consult my diary frequently as I seem to have something on most days and I have more 'senior moments'!

You may have noticed that the magazine is slightly different this month as we thought it might be nice to see the Dates for the Diary at the beginning of the magazine instead of them being relegated to the back page. There is obviously a lot going on this month centred around our churches and Halls; please do try to join in there are so many events that bring the villages to life especially at this time of year.

Thanks so much to all who submitted articles, as always the magazine would be empty without your contributions and please note the early deadline for the January magazine.

Finally from all the magazine team may your Christmas be blessed with happiness, health and the company of those you love.

**Best wishes**  
**Debbie**

**JANUARY** magazine deadline: **Thursday 11<sup>th</sup> December – Noon**

Next Editor: **Selma Todd – 671880**

Contributions to: [editor@enmore-goathurst.org.uk](mailto:editor@enmore-goathurst.org.uk)  
Contact Next Editor direct for queries on contribution format if in doubt.

Advertising queries: **Steve Gormley – 662846**  
[advertising@enmore-goathurst.org.uk](mailto:advertising@enmore-goathurst.org.uk)

Opinions in the magazine may not be those of the Editor or of the Editorial Board.

## Forthcoming events

<b>Date</b>	<b>Day</b>	<b>Time</b>	<b>Event and Venue</b>	<b>page</b>
Dec 5	Friday	7pm	Fish & Chip Quiz EMH	<b>8</b>
Dec 6	Saturday	11-12	Book Borrowing St Michael	<b>3</b>
Dec 7	Sunday	4pm	Taise Service St Michael	<b>16</b>
Dec 7	Sunday	4pm	Christingle Service St Edward	<b>17</b>
Dec 8	Monday	12.30pm	Cottage Inn Keenthorne	<b>11</b>
Dec 9	Tuesday	2pm	Wreath making EMH	<b>10</b>
Dec 11	Thursday	12 noon	Deadline for magazine articles	<b>1</b>
Dec 12	Friday	6.30-8.30pm	Drinks by the Fire Goathurst VH	<b>20</b>
Dec 13	Saturday	10-12	Christmas Pop up cafe EMH	<b>8</b>
Dec 21	Sunday	11am	Christmas Holy Communion St Michael	<b>16</b>
Dec 22	Monday	6.30pm	Carol Service St Michael's	<b>4</b>
Dec23	Tuesday	4pm	Crib service St Edward's	<b>17</b>
Dec24	Wednesday	7pm	Carol service St Edward's	<b>17</b>
Dec 25	Thursday	9.30	Christmas Day Holy Communion St Edward's	<b>17</b>
Jan 6	Tuesday	6.30	Enmore Parish Council meet	<b>19</b>
Jan 9	Friday	7pm	Alpha Course Nether Stowey	<b>25</b>
Jan 10	Saturday	10am	Litter pick Goathurst	<b>3</b>

## Book Borrowing



*Saturday the 6th at Enmore Church, 11 - 12. Come and stock up on your Christmas reading, fiction, travel books and autobiographies.*

*Lose yourself in a good book, there are only so many times you can watch "It's a wonderful life"! Coffee, tea and mince pies, look forward to seeing you. Best wishes and a Happy and Peaceful Christmas. Denise*

*PS. No Book Borrowing in January*

## THE GREAT GOATHURST LITTER PICK!



Join in with the **litter pick** on **SATURDAY 10<sup>th</sup> JANUARY 2026** to help clean up our village. Start the New Year with the feel good factor from knowing that **YOU** will have made a difference to our community! We'll provide everything you need: hi vis jackets, litter pickers, bags, gloves – just bring along your enthusiasm!

**When: SATURDAY 10<sup>th</sup> January 2026 @ 10am.** Help for as long as you can!

**Where: Meet at the crossroads, Park Lane (Haswell Park pillars), Goathurst.**

**Contact: [goathurstparish@gmail.com](mailto:goathurstparish@gmail.com).** phone Niki on 664308 or comment on the Facebook post to let us know you'll be coming.

**St Michael's Church, Enmore  
celebrates Christmas**



**Readings and Carols for  
Christmas**

**Monday 22<sup>nd</sup> December at  
6.30pm**

**Traditional carols, mulled wine,  
mince pies**

**EVERYONE WELCOME**



**Carols and Readings for Christmas** ✨

**Monday 22 December at 6.30pm, at St Michael's Church**

Join us for a warm and joyful evening with traditional carols and readings. All are warmly welcome 🎄



Mulled wine and mince pies will be served afterwards.

If you would like to make any donations to St Michael's Church, please see details:

**Account: St Michael's Church Enmore**  
**Sort code: 30-91-20**

**Account No: 00269228**  
**Ref: Donation**

Gift Aid does allow UK tax payers, an ability to claim a further 25% of the gift. Gift Aid envelopes are available in the church.



Dear Everyone,

As I write, I'm in the middle of planning the second '*Journey to Bethlehem*' event for our youngest school children around the Deanery.

Last year Reception and Key Stage 1 children set out for their *Journey to Bethlehem*. Arriving by coach at Blackmore Farm, they found themselves walking the last distance with some local shepherds showing them the way. They were caught by the noisy tax collectors and eventually, they found the inn and the inn keeper, and they were shown where Mary and Joseph were staying with Baby Jesus, and the star was there too. Then they left the special family and returned to school on the coach. What a journey!

Over 120 children made the *Journey to Bethlehem* under the guidance of Rob Walrond and Andy Levett from the Diocese, ably assisted by extras from the local Open the Book teams led by Robin and Kathryn Popham. Ian and Ann Dyer provided the venue – Blackmore Farm – and excellent hospitality throughout the morning. The shepherds' jokes raised much laughter, as well as some groans too!

The children and their teachers had a wonderful time exploring the journey that Mary and Joseph made to Bethlehem over two thousand years ago. We are looking forward to sharing the '*Journey to Bethlehem*' with another 120 children this year.

As we come to Advent and prepare to celebrate the birth of Jesus, I wonder about our own '*Journey to Bethlehem*', and what Christmas will mean to us.

Whether it is a joyous time or challenging one, my prayer is that you may come to know the love of God through his coming to live amongst us as a human being.

Happy Christmas! Eleanor

## **Not going Home for Christmas!**

### **From Secret World Wildlife Rescue**

We always try to get our casualties home for Christmas if we can. Sometimes their injuries make that impossible and we then try to give them extra tasty meal. We at least know that they are snug and warm even in the coldest of nights. Our staff and



volunteers work all through the Christmas period to ensure that there is help if needed.

Sometimes we find that wildlife hasn't read the book (!), and things arrive in the wrong season. A mallard duck once produced six lovely yellow ducklings in the middle of December when it was snowing! She then deserted them, but we were able to rear them with an incubator and keep them indoors until

the spring came.

In December, a few years ago a vet in Italy got in touch with me as he had a female badger in care with a broken back leg. This he had fixed but he was finding that she was sleeping for long periods and only eating every few days. I explained that as they had delayed implantation, females go into a deep sleep in the winter which allows the embryos to attach and start to grow. Gestation is 7 weeks and 1 day. I therefore said that it was best to leave her to eat when she felt like it and let nature take its course. A very happy vet contacted me a



few weeks later, a very proud 'dad' of two cubs and the leg had healed beautifully.

We always look at December as being the end of a year, but many animals have started to think about breeding. Going into January, you will be hearing the foxes started to call for mates. Tawny and Barn Owls may already be thinking of nesting sites for their next brood.

Even in the short winter days, I seem to find things to do out in the garden just for a few hours. I know I will soon be accompanied by my robin who is always keen to see what I am turning over in case the odd worm or millipedes are uprooted. They are the only birds that continue to sing in the winter to protect their territory.

Wrapped up warm, it's a good time to walk over to our Millennium Wood to look out for the signs of where the deer have been sleeping, the latrines that the badgers have used to mark their territory although not so active at this time of year.

It's lovely to see the wildlife or their signs to show me how we share our fields with wildlife – and the dog enjoys a walk too. Then it's back into the warm and maybe a mug of mulled wine!

I hope you and your family have a lovely Christmas and send our good wishes from us all at Secret World Wildlife Rescue.

Pauline Kidner





## ENMORE MEMORIAL HALL – NEWS AND EVENTS

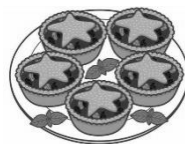


Following a lot of time and effort, we have finally found two local companies who can undertake the renovation work at the hall this side of Christmas! This will include two new doors and the removal of the door in the store room to be replaced with a window. A new insulated roof across the whole back extension will follow the removal of the old, leaking roof. We hope this work will not interfere too much with use of the main hall.



The committee have decided **not** to go ahead with the previously mentioned festive 'open house' evening on the 19<sup>th</sup> December – we felt it was a bit too close to Christmas – but instead, we will give our **final Pop-Up Café** of the year – on the 13<sup>th</sup> December (and Neil's birthday!) - **a fun and festive twist**. We will provide Christmas 'spirit' - music, a raffle, a table quiz, mince pies along with all our usual fare. Christmas jumpers welcome (but not obligatory!). It'll be an informal way to meet up with friends and neighbours before the Christmas mayhem sets in. Please do come along to join in.

If you have any queries or requests, or ideas for events and fundraisers, please do get in touch at [enmorevillagehall@gmail.com](mailto:enmorevillagehall@gmail.com) or by phone on 07424 197200.



**Future dates for your diary – all at EMH:**

- Fish 'n' chips Quiz – Friday 5<sup>th</sup> December, 7pm Please ring Doug (01278 671188 if you wish to enter a team)
- Festive Pop-Up Café - Saturday 13th December, 10-12noon

**P.S. Sally has just sent in the totals for the Christmas Card Appeal. Thank you so much for your generous donation to us. We hope to use the money for further improvements for the Hall**

## Are you looking for a volunteering opportunity?



We have several opportunities at Fyne Court including outdoor roles like gardening, conservation, and estate volunteers. We also have onsite volunteering roles including looking after our second hand bookshop, and family engagement volunteers which involves delivering our popular Toddler Tuesdays sessions. For more information, please either email us at [FyneVolunteering@nationaltrust.org.uk](mailto:FyneVolunteering@nationaltrust.org.uk) or use the QR code to view roles online and apply.

We look forward to welcoming visitors over winter at Fyne court. We have some great activities this winter, including sessions of our Toddler Tuesdays, activities with the RSPCA, and the opportunity to have a go on our new VR headsets! For more information about events (especially Christmas ones) please visit our website [www.nationaltrust.org.uk/visit/somerset/fyne-court/events](http://www.nationaltrust.org.uk/visit/somerset/fyne-court/events).  
**National Trust - Fyne Court and Quantocks**

## St Edward's Church, Volunteer Cleaners Needed Please!



**Our loyal, hard working team would welcome new members!**  
They do a wonderful job throughout the year and many visitors comment on how well-cared for our wonderful church appears.

**Would you be able to spare a couple of hours, once every eight weeks, to help clean the inside of our beautiful church?**  
Ideally, we have pairs working together on a rota to ensure that the church is cleaned regularly. There is no set day or time, and duties can be undertaken at your convenience.



If you may be able to help, please contact Brenda  
(07790 825207 or email: [timpetillbrenda@hotmail.co.uk](mailto:timpetillbrenda@hotmail.co.uk)).

# ENMORE & DISTRICT GARDENING CLUB



**We send seasonal greetings and good cheer for the festive season ahead!**

**No formal meetings in December or January as we take a break over the winter months.**



**Wreath Making on Tuesday 9<sup>th</sup> December  
in Enmore Hall, 2-4pm. Refreshments**

All materials supplied but please bring any bling you wish to attach!

Also gloves and secateurs. £20 per person

Please let me know if you would like to decorate a woven ring of local hazel rather than create a traditional wreath.

Contact [jan.johnston2@btinternet.com](mailto:jan.johnston2@btinternet.com) or 0776217965

Join the club for £20 annual membership and enjoy 9 monthly meetings with a talk or activity of gardening interest. Plus, raffle & refreshments. We also arrange visits to gardens throughout the year.

Next month we will publish our programme of events in the magazine but if you wish for more information please contact our chairman: [jeniferclarke60@gmail.com](mailto:jeniferclarke60@gmail.com)

## **Enmore Parochial Church Council**

We look forward to welcoming you to our upcoming events — your support makes these gatherings truly enjoyable and memorable.

Please do join us and make the most of our beautiful church and village hall. We are incredibly fortunate to have such special spaces at the heart of our community.

### **Enmore Church – Harvest Celebrations (apologies not included in Nov issue)**

#### **Harvest Supper – Friday 3 October, Memorial Hall**

Thank you to everyone who attended and supported this wonderful evening. The Village Voices choir opened the event beautifully, with everyone joining in for a few songs. Revd. Eleanor King offered Grace before we enjoyed a delicious Ploughman's supper, followed by an incredible selection of homemade desserts — with so many to choose from, it was hard not to try them all!

A heartfelt thank you to everyone who helped set up, decorate, dress the tables, wash up, pack up and clear the hall. The hall looked truly lovely. We are also grateful to our farmers and land, whose hard work and care for the land make celebrations like this possible.

#### **Harvest Service – Sunday 5 October, St Michael's Church**

It was wonderful to see so many in the congregation for our Harvest Service. The hymns were uplifting, and with the Village Voices choir leading the singing, we really did raise the roof! Donations of food were brought to the altar and have since been taken to the Salvation Army. Together, we celebrated and gave thanks for our land, farmers, and the harvest. Afterwards, we gathered for light refreshments and a friendly catch-up, a truly lovely Sunday morning.

### **CHRISTMAS LADIES LUNCH**

**On**

**MONDAY, 8<sup>th</sup> DECEMBER 2025, 12.30pm**

**At the Cottage Inn, Keenthorne  
Nr. Nether Stowey**

**£15.00 for two courses**



Please phone or email Jan Hodson  
on 07985194265 or [hodsons73@btinternet.com](mailto:hodsons73@btinternet.com)  
to book for 'The Monday Club' asap

**The poem below was written by the SWT commissioned poet for the day at the Wilder event.**

**WHAT HAPPENS NEXT IS UP TO US**

It can feel impossible to turn  
the ship around,

but we can start with our gardens.  
The churchyard. The school.

A whole classroom of children,  
Not a single bored face.

Understanding plants change.  
People realise it's not about chaos

but care. Nurturing the ecosystem  
all of us share.

For wildlife and for us.  
Rooting positivity. Growing our own luck.

And everyone knows each other  
so much better now.

Community is an oak tree.  
All we need to do: looks at what's there,

Make a plan, prepare the ground  
For the next generations

To stretch their branches out.

(copyright Poetry Machine)



## SPAXTON COMMUNITY STORES



### Christmas opening:

<b>Christmas Eve</b>	<b>4pm close</b>
<b>Christmas Day</b>	<b>closed</b>
<b>Boxing Day</b>	<b>closed</b>
<b>New Year's Eve</b>	<b>4pm close</b>
<b>New Year's Day</b>	<b>9-midday- shop only open, no PO</b>
<b>Fri 2 Jan</b>	<b>5pm close -no late night.</b>

All other opening times as normal.

**Christmas goodies** will be on sale from Monday 1 December. We shall have a selection of ready- made hampers - the perfect gift! If you would like to post a gift, we also have a range of gift cards available from the post Office.

**The Spaxton Calendar** is already on sale, local animals is the theme for 2025, all photos taken by local photographers.

**Late night opening:** We open on a Thursday and Friday evening until 7 pm. While appreciated by those of you who arrive home from work and have forgotten to get milk or have run out of food for your pet, we are having difficulty staffing the shop during this time. If you are someone who does not yet volunteer for the shop, this is a very light shift from 5-7.15 (persuade a friend to volunteer with you perhaps?) and you will of course be helping your community! If you think you could help -weekly or fortnightly -, please contact Karen, our shop manager in the shop or via email ([mgr.spaxtonstores@gmail.com](mailto:mgr.spaxtonstores@gmail.com))

**Salt Marsh Beef:** a new addition to our stock. “Aberdeen Angus and Hereford cattle reared on Steart Marshes enjoy a natural diet of samphire and sea aster forage and produce a leaner, more nutritionally dense, higher in omega3 and vitamin A&E, whilst being lower in saturated fats.” A selection of beef -steaks, burgers, mince and stewing steak as well as roasting joints frozen at source are available from our freezer.

<b>Local Church Services</b>		
<b>December 2025</b>	<b>St Michael and All Angels, Enmore</b>	<b>St Edward, King and Martyr, Goathurst</b>
1 <sup>st</sup> Sunday <b>7<sup>th</sup> December</b>  <b>2<sup>nd</sup> Sunday of Advent</b>	4.00pm Taizé Service for Advent	4.00pm Christingle
2 <sup>nd</sup> Sunday  <b>14<sup>th</sup> December</b>  <b>3<sup>rd</sup> Sunday of Advent</b>	-	9.30am Holy Communion
3 <sup>rd</sup> Sunday  <b>21<sup>st</sup> December</b>  <b>4<sup>th</sup> Sunday of Advent</b>	11:00am Holy Communion for Christmas	-
<b>22<sup>nd</sup>/23<sup>rd</sup> December/ Christmas Eve/ Christmas Day</b>	Tue 22 <sup>nd</sup> Dec 6:30pm Carol Service  Wed 24 <sup>th</sup> Dec 3:00pm Christingle service	tues 23 <sup>rd</sup> 4.00pm - Outdoor Crib  Wed 24 <sup>th</sup> 7.00pm - Carol Service  Thurs 25 <sup>th</sup> 9.30am - Holy Communion for Christmas Day
<b>4<sup>th</sup> Sunday 28<sup>th</sup> December Christmas 1</b>	11:00am Benefice Service of Holy Communion in Nether Stowey Church	

\*For other Benefice services and mid-week Celtic Morning Prayer see

<b>Other Local Services in the wider Benefice *</b>			
<b>Aisholt</b>	<b>Nether Stowey</b>	<b>Over Stowey</b>	<b>Spaxton with Charlynch</b>
11.00am Matins	11.00am Advent Service Church Centre	4.00pm Evensong (BCP)	4:00pm Evensong (BCP)
3.30pm Christingle  Tues 16 <sup>th</sup> Dec 6:30pm Carols by Candlelight	11:00am Holy Communion In Church	9.30am Holy Communion	11:00am Morning Worship
11.00am Holy Communion for Christmas	11.00am Carol Service Church Centre  3.00pm Quiet Christmas in Church	6:30pm Carols by Candlelight	11.00am Holy Communion
Thurs 25 <sup>th</sup> Dec 11.00am Matins for Christmas Day	Tues 24 <sup>th</sup> 5.30pm Carols on the Cross	Tues 24 <sup>th</sup> 11.30pm Midnight Holy Communion	Tues 24 <sup>th</sup> 5.00pm Carol and Crib Service
	Thurs 25 <sup>th</sup> Dec 11.00am Morning Worship Christmas Day in Church	Thurs 25 <sup>th</sup> Dec 9.30am Morning Worship for Christmas Day	Thurs 25 <sup>th</sup> Dec 11:00am Holy Communion for Christmas Day
11:00am Benefice Service of Holy Communion in Nether Stowey Church			

the Benefice News, Church Noticeboards and Website below  
<https://quantockvillagesbenefice.org.uk>



## Christmas at St Michael & All Angels.

### Enmore



**Advent Taizé Service** Sunday December 7<sup>th</sup> at 4pm.

**Morning Worship** Sunday December 14<sup>th</sup>

**Christmas Holy Communion** Sunday December 21<sup>st</sup> at 11am.

**Christmas Readings and Carol Service** Monday December 22<sup>nd</sup> at 6.30pm.

Join us for Mince pies and Mulled wine afterwards.

**Crib Service** Wednesday December 24<sup>th</sup> at 3pm.

All are welcome listen to the story of Mary's journey to Bethlehem and the Christmas story find the nativity figures as the story unfolds.

**Remembering dear friends and neighbours who have passed away in 2025**



**BRIAN COLES**

**GORDON MANSFIELD**

**CLIVE MOORE**

**MICHAEL WILSON-SMITH**

**SARAH DRUITT**

**GEOFF MARCHANT**

**CYRIL NORMAN**

**KEN STONE**

**ALAN YENTOB**

## **Christmas with St Edward's Church, Goathurst**



Everyone is invited to decorate the tree at the lychgate with one of their own decorations or one from the basket in the church porch.

### **Sunday 7<sup>th</sup> December at 4pm: Christingle Service**

in the church (followed by refreshments). Families and ALL ages are welcome.

### **Tuesday 23<sup>rd</sup> at 4pm: Crib Service.**

Meet at the church at 3.45pm and follow the star with us to the stable (a short walk). You might like to wear 'suitable headgear'-will you come as an angel, shepherd or king? Followed by hot drinks and biscuits.

### **Wednesday 24<sup>th</sup> at 7pm: Carol Service in church.**

Followed by mulled wine and mince pies.

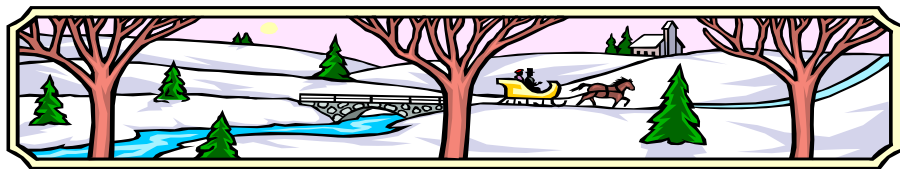
### **Thursday 25<sup>th</sup> at 9.30 am: Christmas Day Holy Communion**

Please watch the noticeboard for any updates should changes to the schedule be necessary

**Our Parochial Church Council (PCC) Christmas Cards have been designed by Kids @ Goathurst: with special thanks to Roo (aged 5), Matilda (6), Daisey (6). Dylan (7) Max (9), William (8) and Amelia (11)**

There will be a chance to donate to the Bridgwater Food Bank for Christmas. Labelled crates will be placed in Goathurst Church, from Sunday 7th December, for 2 weeks. Please donate children's books, toys and non-perishable foods, for those in need over Christmas and into the New Year.

Thank you      Goathurst PCC.



The magnificent sum of **£3,290.00** has been raised in November 2025 through the Enmore & Goathurst Magazine's Christmas Card, benefiting as follows:

St. Michael's Church, Enmore	£1,258.00
St. Edward's Church, Goathurst	£610.00
Enmore Memorial Hall	£827.00
Goathurst Village Hall	£595.00

This is a marvellous achievement and praise must be given for your ongoing wonderful support and generosity to our churches and halls, especially considering rising inflation and the current cost of living.

Thank-you if you were able to sign the *giftaid* envelope declaration this Christmas as it means a further **£767.50** may be claimed by our churches and halls as an extra Christmas gift, making this year's donations worth **£4,057.50!**

However much your donation, whether it is £10, is more or less, *gift-aided* or not, your donation is greatly valued and welcomed. Many of you have increased your donations this season and a few generous benefactors have given larger donations, thank-you, all are so appreciated!

A big thank-you to all involved in producing our Christmas Card. To the Magazine Team for sponsorship, printing and distribution; to Graham George, especially for his beautiful Christmas Card design 'Wishing us all a Very Merry Christmas and a Very Happy New Year', and for also donating our festive rainbow card as well as painstakingly compiling all our names and addresses correctly; and finally, grateful thanks to our Christmas Card printer Jim Webb; our collators and our wonderful delivery team.

And lastly thank-you to John and Ruth Capell, our Goathurst collectors, who again like myself, are delighted with this excellent response from our communities showing that in these uncertain financial times our churches and halls are still valued and needed as an integral and important part of our lives!

With my best wishes for Christmas and the Happy New Year, Sally Tottle

# ENMORE PARISH COUNCIL NEWS



[www.enmoreparishcouncil.org](http://www.enmoreparishcouncil.org)

This November your Parish Council held a normal business meeting on 4th November. In due course the minutes of this meeting will be available on our website.

As you will be aware, your Councillors take great interest in the issue of speed management within the village, and road safety in general, despite not having powers of enforcement. The Speed Indicator Devices (SIDs) purchased by the council are effective but there are still some drivers who persist in speeding through the village. We are looking at possible next steps to reduce this. It is hoped that data downloaded from the SIDs will soon be available to view on the parish council website and will make for some interesting reading! Our narrow roads and lack of footway, vulnerable road users such as pedestrians, cyclists and horse riders should be given a wide (and slow) berth and care should be taken not to spook horses.

Our next meeting will be held on Tuesday 6<sup>th</sup> January, and we plan an earlier start to our Parish Council meetings in the dark winter evenings. Agenda and papers will be available on the Meetings page of the website a few days in advance. It is at this meeting that the Parish Council's budget is set for next year so please if you have any thoughts about what projects or concerns you would like to see the parish council undertake do contact any of your Parish Councillors or the Parish Clerk.

In the meantime, all good wishes for a Happy Christmas from your Councillors and their officers: Michael, Fiona, David, Andrew, Graham, Amanda, Debbie and Anne.



**Men's Breakfast at  
The Tynte Arms Enmore -  
Saturday December 20<sup>th</sup>**

Meet at 9:00 Finish by 10.30am

**Prepare for Christmas fare by joining us for this.**

**Fine food and company.**

Want to come? Please let me know.

**preferably** - Email: colinchalmers399@gmail.com

else Tel: 661 217, or Text: 07436 285347

**before noon on Thursday the 18.<sup>th</sup>**



***GOATHURST VILLAGE  
HALL***



***Invite you to  
Drinks by the Fire***



*On*

**Friday 12 December 2025**

**from**

**6:30 - 8.30pm**

**Bring the Family, friends, neighbours along**

**For a great social evening. ☺**



## MAGAZINE NEWS!

We held a meeting at the Tynte Arms in October.

It was our first since taking on our new roles following the May AGM. A summary of my report was to note our new group email addresses are in circulation and please send any contributions for the magazine to [editor@enmore-goathurst.org.uk](mailto:editor@enmore-goathurst.org.uk).

Neil McCreery edited his first edition in October which was very good, and we have a new printer, Martin Coles who is now very competent and flying solo following support from the Printing team.

We are more than grateful to Sharon Piron this year for editing two editions of the magazine!

And would now welcome a new editor volunteering for next year. Please contact Debbie [secretary@enmore-goathurst.org.uk](mailto:secretary@enmore-goathurst.org.uk) or myself [chair@enmore-goathurst.org.uk](mailto:chair@enmore-goathurst.org.uk)

It is your community magazine and any new ideas for articles you would like to see included, please let us know. Now online via PC websites, so easier to catch up in those spare moments!

"Merry Christmas"

Jan Johnston.



## ENMORE PARISH COUNCIL Vacancy for a councillor

Due to the resignation of DAVID COMLEY there is a vacancy for a Parish Councillor for Enmore Parish Council.

If, within 14 days\* after the date of this notice, a request for an election to fill the said vacancy is made in writing to the Chief Executive, Electoral Services, Somerset Council, County Hall, The Crescent, Taunton, Somerset, TA1 4DY by TEN electors for the Parish, an election will be held to fill the said vacancy, otherwise the vacancy will be filled by the Parish Council by co-option.

\* In computing any period of time for this purpose, a Saturday, Sunday, day of the Christmas break, of the Easter break or of a bank holiday or day appointed for public thanksgiving or mourning must be disregarded.

Debbie Mcilroy Parish Clerk

November 14th 2025

**A couple of events from St Margarets -for more information/events please look on their website- especially the New Year's Day Dip at Minehead beach- for a real challenge!**

**Light up a Life** -For many of us, the festive season is a time to gather with loved ones, while remembering those we miss so much. This winter, St Margaret's Hospice is once again inviting their local community to remember their loved ones by dedicating a star in their memory in support of their Light up a Life appeal.

The hospice is also inviting the community to attend their Light up a Life gatherings. These moving events provide an opportunity to remember and celebrate the lives of loved ones through readings, music, and the lighting of candles.

**Thursday 4 December** – Monkton Elm Garden Centre, Taunton – 6pm to 7.30pm

**Sunday 7 December** – St John's Church, Yeovil – 2.30pm to 4pm

More information: <https://www.st-margarets-hospice.org.uk/ways-to-give/light-up-a-life/>

**Taunton Tinsel Trot**- Festive fun will flood the streets of Taunton with St Margaret's Hospice's Taunton Tinsel Trot, organised for the first time ever in collaboration with the Taunton Carnival Committee. Participants of all ages are encouraged to don their best Christmas jumper and sparkling accessories for this family-friendly run in support of local hospice care. There is a 3K run for ages 11+, and a 1K kids' run (pushchairs welcome!). All participants will receive a free Santa or Elf hat and all proceeds will support St Margaret's Hospice in providing specialist, compassionate care for patients and their loved ones.

**Date: Sunday 7 December** Castle Green, Taunton **Time:** 10am junior race, 10.30am full race

More information: <https://www.st-margarets-hospice.org.uk/event/taunton-tinsel-trot/>





Founded in 1810 by Rev. John Poole

We have a fantastic opportunity to work at our school and are currently recruiting the following staff:

### **MAINTENANCE/ODD-JOB PERSON**

Up to 10 hours per week – Flexible Hours

Salary: Grade 14 point range (4 - 6). Rate of Pay £25,185 - £25,989 pro rata per annum, plus Pension Scheme, free parking onsite

**Closing Date: Monday 5<sup>th</sup> January 2026**

**Interview Date: Wednesday 14<sup>th</sup> January 2026**

We are looking for a reliable person to undertake a wide range of duties, including but not limited to undertaking general maintenance/decoration/minor repairs to buildings, furniture & grounds. Complete Health and Safety checks and keep accurate records. We need someone who is motivated, flexible and can work proactively to ensure a safe environment for the staff and pupils. This role includes some work during school holiday time, additional hours will be paid, where necessary, for larger jobs.

Previous experience of working in a school environment would be desirable but not essential and the ideal candidate should be able to demonstrate an understanding of health and safety legislation, good organisational skills in relation to managing own workload, the ability to regularly handle/carry heavy items, as well as the ability to use ICT effectively especially word, excel and email systems. Examples of duties required for the role.

Enmore School is committed to safeguarding and promoting the welfare of children and young people and expects all staff and volunteers to share this commitment. The post is subject to relevant safer recruitment employment and criminal background checks via the disclosure procedure, and a successful medical check.



Further information is available by email and on our school website [Enmore Church of England Primary School - TA5 2DX - Staff Vacancies](https://www.enmoreprimaryschool.org.uk) or by contacting the school office. Completed forms should be sent to Mrs. P. Eaglestone-Gunter, Business Manager at the school – details below.  
Telephone: 01278 671370  
Address: Enmore C of E Primary School, Enmore, Bridgwater, Somerset, TA5 2DX  
E-mail: [peaglestone-gunter@enmoreprimaryschool.org](mailto:peaglestone-gunter@enmoreprimaryschool.org)

**NB: Only completed application forms will be considered for the posts, CV's will not be accepted and will not be included in the selection process.**

## SOMERSET WILDLIFE TRUST'S (SWT) WILDER EVENT 2025



The above was drawn by the SWT commissioned artist during the Wilder Enmore & Goathurst presentation.

## LOOK WHAT WE FOUND IN ONE HOUR!!



A faithful group of litter pick volunteers managed to again find an eclectic mix of rubbish at November's Enmore litter pick. Amongst the things too big to go into the blue bags were a large flat screen television, an engine and a vacuum

cleaner! Amazing what you can collect in about an hour!

Refreshments, as always, were enthusiastically enjoyed afterwards. Whilst it's difficult to affect the big picture, on our Enmore patch we can at least take action to ensure that our village looks clean, green and cared for. Do join in when you can.



### Try Alpha

Unpack the Christian Faith together.

Meet new people and explore the Christian Faith together.



Alpha is for anyone who is curious. No judgement no pressure.

Each session unpacks a big question of life, faith and purpose and is designed to spark conversation.

Come along and see what you think.

St Mary's Church Centre, Nether Stowey

Friday January 9 th starts at 7pm with light refreshments.

Contact: Jennifer 01278 733007 or Brenda Smith 01278 662491 for more information



## Local and Regional Weather Report



Weather lore for December says “If December is rainy, mild, and unsettled, the winter will not be harsh”. A bit of a mixed blessing really. However, weather lore mostly concerns the weather at Christmas and what this foretells for the New Year. “If Christmas Day be bright and clear, there’ll be two winters in the year” and “If the sun shines through the apple tree on Christmas Day, there will be an abundant crop in the following year”. However, *“so far as the sun shines on Christmas Day, so far will the snow blow in May”*. On December 21<sup>st</sup> (Shortest day and St Thomas's day) “look at *the weather cock at twelve o'clock, and see which way the wind is, for there it will stick for the next (lunar) quarter*”. Finally, *“If there's thunder during Christmas week, the winter will be not be meek”* and “If New Year’s Eve night-wind blows north-east, flee it, man and beast”.

October began warm and wet with storm Amy and strong winds. The rest of the month was unsettled and gloomy, but mostly dry with some heavy downpours. Nearly every day saw cloudy weather or rain, but only 5 days out of 10 were sunny or had sunny intervals.



Rainfall: Local 58 mm, Regional 123.5 mm = 2% above normal

Minimum temperatures: Local 9 deg, Regional 8.5 deg = +1.3 deg

Maximum Temperatures: Local 17 deg, Regional 14.2 deg = +0.5 deg

What is the long-range forecast for December? Warm, wet and windy according to the Met Office. Can we add any more from the weather lore forecast? The weather on November 10<sup>th</sup> (Martinmas Eve) was rainy, cloudy and warm and so it should remain for the rest of the winter. The Jet Stream forecast at the start of November shows it across UK with low pressure and winds from the south west, changing to winds from the north west and high pressure. This indicates unsettled weather, with wetter, warmer weather changing to colder brighter weather.

Mike Head



**Free to tapestry or cross stitch enthusiast.**

Due to increasingly arthritic hands, I have two almost new frames – one free-standing, the other meant for use in one's lap – boxed. They need a good home.



phone 661 217 or text: 07436 285 347

## Village Information 13th August 2025

amendments to secretary@enmore-goathurst.org.uk

Rector	Rev'd Eleanor King Email: eleanor.king@hotmail.com		734 777
Associate Priest	Rev'd Kate Sax – retired in June 2025 Contact Eleanor if necessary		
Church Contact	Alison Hoare Email: qv.benefice@gmail.com		732 855
Church Wardens	Enmore	Rosalie Burge,	671 337
	Goathurst	Brenda Smith	662 491
Parish Councils	Enmore	Michael Hopkins	671 296
	Web site	Enmoreparishcouncil.org.uk	
	Email	enmorepc@gmail.com	
	Jubilee	Padlock	1966
	Goathurst	Richard Kilbey	662 523
	Web site	www.goathurstparish.org.uk	
Village Hall	Enmore	Booking Number	07424197200
	Goathurst	goathurstvhbookings@gmail.com	07816251950
Pub		Tynte Arms	671 351
Magazine	Chair	Jan Johnston	671 560
	Secretary	Debbie McIlroy	456 964
	Advertising	Steve Gormley	662 846
Councillors Somerset Council		Mr Mike Caswell	07768744730
		Mr Brian Bolt	07970855990
Pathway Officer	Enmore	Amanda Hubbard	671 742
Neighbourhood Watch	Enmore	Graham Fergusson	671 680
	Goathurst	tba	
Enmore School	Head	Mr Duncan MacRae	671 370
Newspapers	News Team Ltd		01782959530
	Spaxton Community Shop & P.O.		671 487
	Bridgwater Store, Queenswood Rd., Durleigh		258 056
Milk delivery	Milk and More: <a href="http://www.milkandmore.co.uk">www.milkandmore.co.uk</a>		03456063606
Mobile library	Wednesday 11:55-12:30, every 4 weeks (Goathurst)		
Police	Call 101 to speak to Sedgemoor South Neighbourhood		
Refuse Collection and Recycling	Please refer to Somerset Waste Partnership for dates. Recycling weekly on Wednesday, black bin every three weeks. Garden waste every two weeks – different day in each village.		